

3A Sanitary Actuated Ball Valves

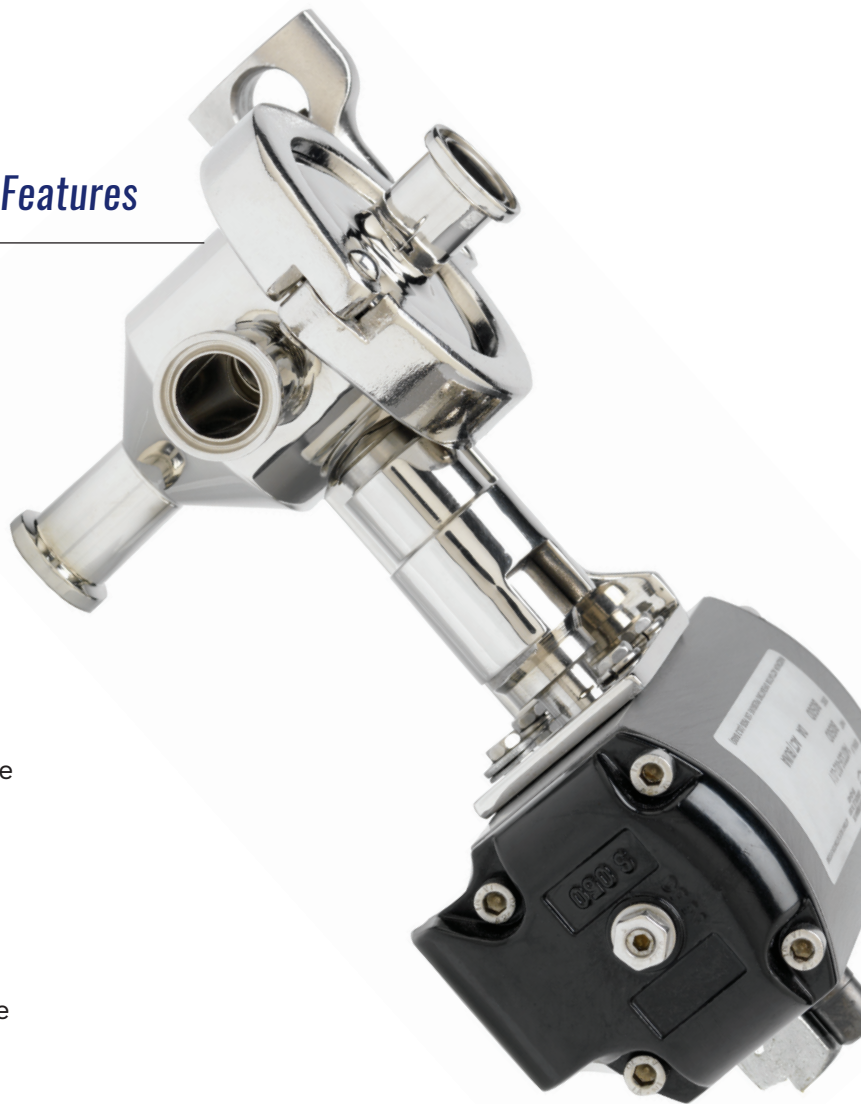
Lee Sanitary Actuated Ball Valves are precision made of Type 316-L stainless steel and are designed for corrosion-resistant, high-sanitary conditions in the food, drug, cosmetic, pharmaceutical, beverage, chemical and metal-detection industries worldwide. They are 3A Sanitary certified and USDA approved.

All Lee valves are available with various optional connection fittings such as sanitary Tri-Clamp®, Acme (bevel seat), I-line, flanged, and butt-weld.

3A Sanitary Actuated Ball Valves Standard Features

All Lee Actuated Ball Valve Styles Feature:

- 3A Sanitary certified and USDA approved
- T-316-L stainless steel contact parts with PTFE or Mica-filled PTFE Seals
- Sanitary #4 I.D./O.D. finish
- Fast breakdown (no special tools required) for cleaning and maintenance
- Minimal replacement parts — reduce maintenance time and costs
- Easy to clean
- Maximum pressure: 300 PSIG
- Maximum temperature: 450°F
- Long term sanitary service if operating, maintenance and cleaning instructions are followed
- Full-port design for unobstructed product flow
- Actuators with hard-anodized aluminum construction (stainless steel and specially coated materials available)
- Cycle times of approximately one second or less are accomplished when coupled with various actuator options
- Equipped with various pneumatic or electric actuators
- Available with various optional connection fittings such as sanitary Tri-Clamp®, Acme (bevel seat), I-line, and flanged.

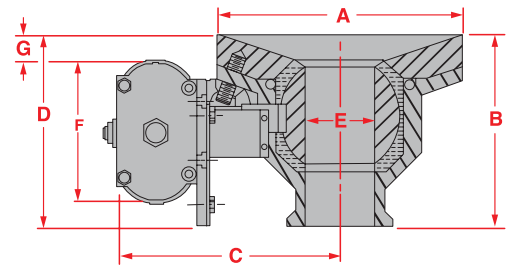


3A SANITARY ACTUATED BALL VALVES

Air-Actuated Flush Mounted (BFT) Kettle/Tank Valves

- 1 1/2" through 4" full flow port sizes (eliminates product flow restrictions)
- Rack and pinion actuator (stainless steel and electric actuators available)
- Mounting flange easily welded to any style tank bottom (vacuum rated mounting flanges available)
- Lends itself to C.I.P. (clean in place) systems

VALVE SIZE	A	B	C	D	E	F	G	WEIGHT (LBS.)		
								TOTAL DA	TOTAL SR	FL
1 1/2"	5 1/2"	4 5/8"	8 3/16"	2 3/16"	1 1/2"	4 1/8"	5/32"*	15 1/2	19 1/2	3 1/2
2"	6"	5 3/16"	5 3/16"	2 7/8"	2"	4 1/8"	1/16"*	18 1/2	22 1/2	4
3"	8"	7 1/16"	7 1/16"	3 27/32"	3"	4 5/8"	3/16"	39	47	7 1/2
4"	10 1/2"	9 5/8"	9 5/8"	4 19/32"	4"	4 5/8"	15/16"	74 1/2	82 1/2	13

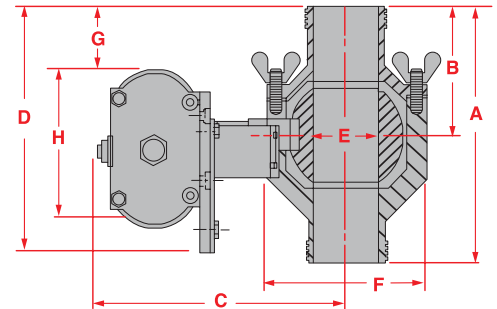


Flush-type ball valve with 90° air-to-air or spring-return rack and pinion actuator. Mounting flange material specifications: ASTM A351 GR CF3m. *G Dimension on 1 1/2" and 2" actuator assembly is slightly above valve flange. DA = Air-to-Air; SR = Spring Return

Air-Actuated Two-Way (2FT) In-line Valves

- 1/2" through 4" full flow port sizes (eliminates product flow restrictions)

VALVE SIZE	A	B	C	D	E	F	G	H	WEIGHT (LBS.)	
									DA	SR
1 1/2"	5 13/16"	2 29/32"	8 3/16"	4"	1 1/2"	3 5/8"	1 32/8"	4 1/8"	13 1/2	17 1/2
2"	6 13/16"	3 13/32"	8 7/16"	4 1/2"	2"	4 1/8"	1 17/32"	4 1/8"	15 1/2	19 1/2
3"	9 7/16"	4 23/32"	10 3/16"	6 7/32"	3"	5 5/8"	2 17/32"	4 5/8"	34	42
4"	13 1/16"	6 17/32"	12 5/32"	8"	4"	7 1/4"	4 3/8"	4 5/8"	63 1/2	71 1/2

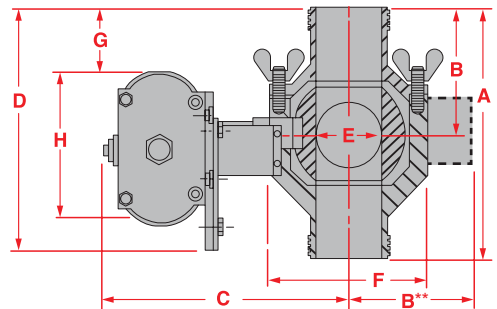


Two-way in-line ball valve with 90° air-to-air or spring-return rack and pinion actuator. *Dimensions for double-acting R&P actuators only. Contact us for dimensions of spring-return R&P actuators. DA = Air-to-Air; SR = Spring Return

Air-Actuated Three-Way (3FT) In-line Diverter Valves

- Three-way valves simplify multiple tank filling and draining operations
- 1/2" through 4" full flow port sizes (eliminates product flow restrictions)
- Rack and pinion actuators available in air-to-air and spring return designs (offers straight thru or right angel flow)

VALVE SIZE	A	B	C	D	E	F	G	H	WEIGHT (LBS.)
1 1/2"	5 13/16"	2 29/32"	8 3/16"	4"	1 1/2"	3 5/8"	1 32/8"	4 1/8"	13
2"	6 13/16"	3 13/32"	8 7/16"	4 1/2"	2"	4 1/8"	1 17/32"	4 1/8"	15
3"	9 7/16"	4 23/32"	10 3/16"	6 7/32"	3"	5 5/8"	2 17/32"	4 5/8"	33
4"	13 1/16"	6 17/32"	12 5/32"	8"	4"	7 1/4"	4 3/8"	4 5/8"	61 1/2



Three-way in-line diverter valve with 90° air-to-air or spring-return actuator. Dimensions for double-acting R&P actuators only. Contact us for dimensions of spring-return R&P actuators. Three-way valves have a working pressure to 150 PSIG and a maximum working temperature of 300° F (for increased pressures to 300 PSIG and temperatures to 450° F, request Mica-filled seals).

**Diverter port as pictured is for dimension purposes only.

3A Sanitary Actuated Ball Valve Options & Accessories

While the style of valve you choose will have its own set of features, you also have the opportunity to choose from a few other options.

Rack & Pinion Actuators (Supernova B-Series)

- Integral travel stops in both directions with 10 degrees of overtravel to assure precise adjustment of both the open and closed positions.
- Full-length gear engagement between piston rack and electroless nickel plated pinion.
- Flats on pinion drive shaft accommodate wrench overrides and accessories.
- Field reversible action simply by rotating pistons 180°.
- Precision die cast pistons with large cylinder bearings increase efficiency and cycle life.
- Corrosion resistant hard-anodized aluminum housing with stainless steel fasteners.
- Broad size range offers optimum actuator sizing for each valve requirement.

Actuator Options & Accessories

- Pneumatic Rack and Pinion
 - Available in air-to-air (DA) or air-to-spring (SR) configurations
- Electric
- Stainless Steel
- Directional Valve (Solenoid)
 - Mounts directly to SuperNova series actuators (eliminates cost of tubing and fittings)
 - Available for double acting and spring return actuators with Nema 4X, 7 and 9, or intrinsically safe and low power solenoid operators
- UltraSwitch with Pharos Indicator (XL Series)
 - Nema 4, 4X, 7 and 9
 - Class I, Groups C and D, Divisions 1 and 2
 - Class II, Groups E, F and G, Divisions 1 and 2
 - Integral potting of leads and two 3/4" conduit entries
 - "Quick-Set" cams and captive cover bolts
 - Analog resistive and current outputs
- Filter Regulator

Outlets

- Tri-Clamp® (standard)
- I-line
- Acme (bevel seat)
- Flange